

# 473 Running

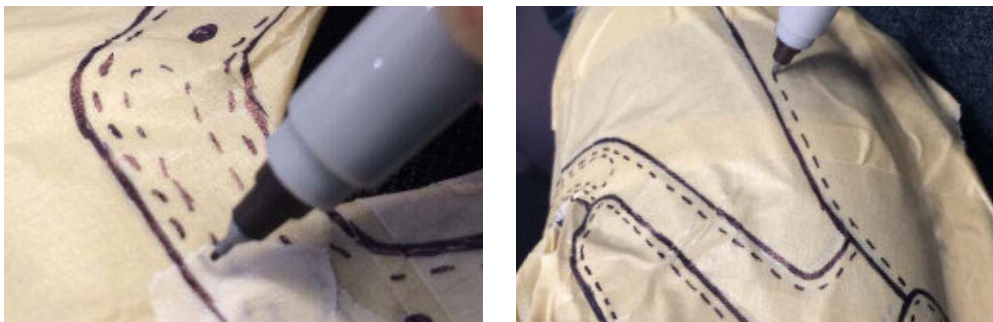
## ■ Sketch and Tape-up Review

Sketches and Tape-ups to show how the sketches could be transferred to a 3D shape.



## ■ Details

A marker is used on the masking tape using a steady hand to show how the pattern can wrap around the shape of the upper.



VICTOR JAMES TORO

## ■ Selected Upper

With the upper selected, the next steps are to refine the style and make a upper pattern.



## ■ Pattern

After all the changes are applied to the final version of the design, I remove the tape so I can import the design into AI.



# 473 Running

## ■ Stage 1

Study pullover and make adjustments to match design to design specs.  
Send changes to factory and work with pattern master on updates.



## ■ Stage 2

After 1st set of changes made, the samples is returned and reviewed once again.  
Changes are made after meeting with department managers and director.



## ■ Stage 3

Final adjustments to design are made and the sample has been sent with correct materials. Once design is confirmed new samples will arrive with final colors.



## ■ Stage 4

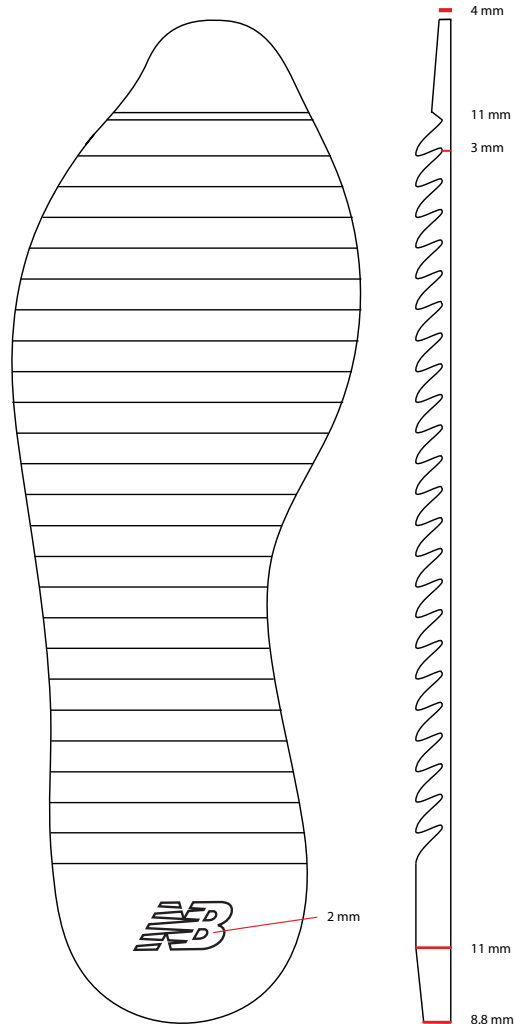
Final prototype design with confirmed colors and materials. Sample is ready for sales reviews and sent to buyers.



## 473 Running

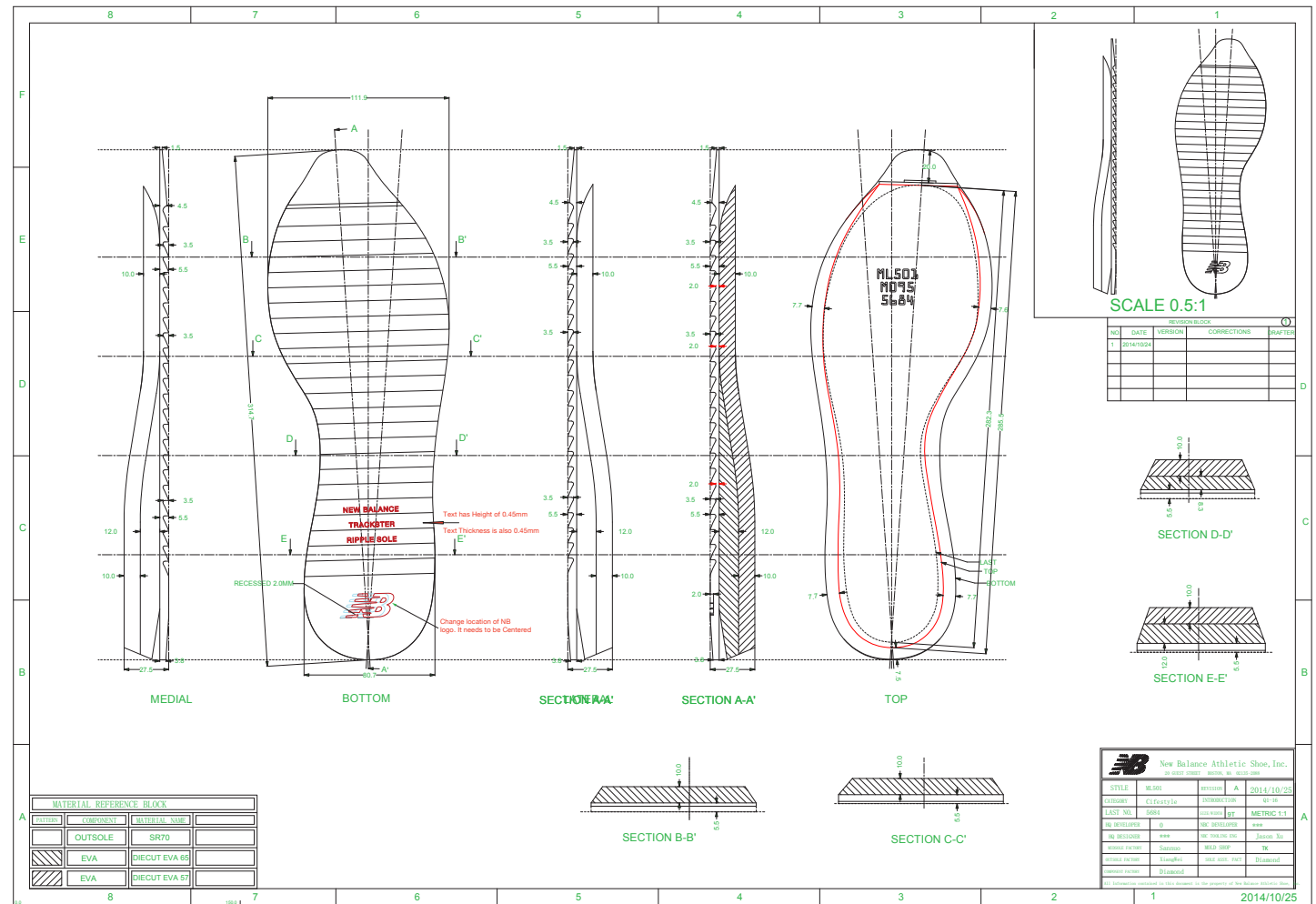
Width  
10.7 cm

Length  
30.6 cm

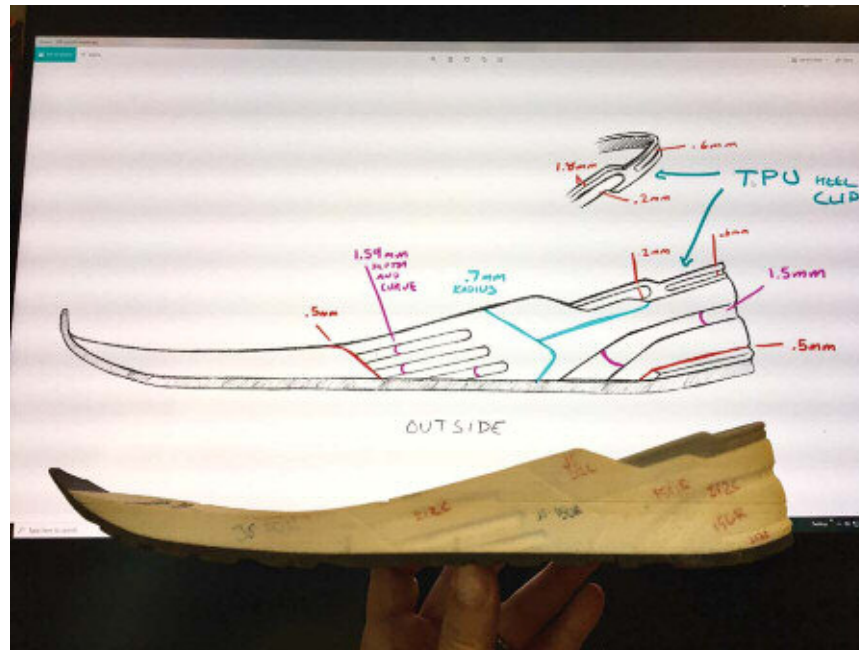
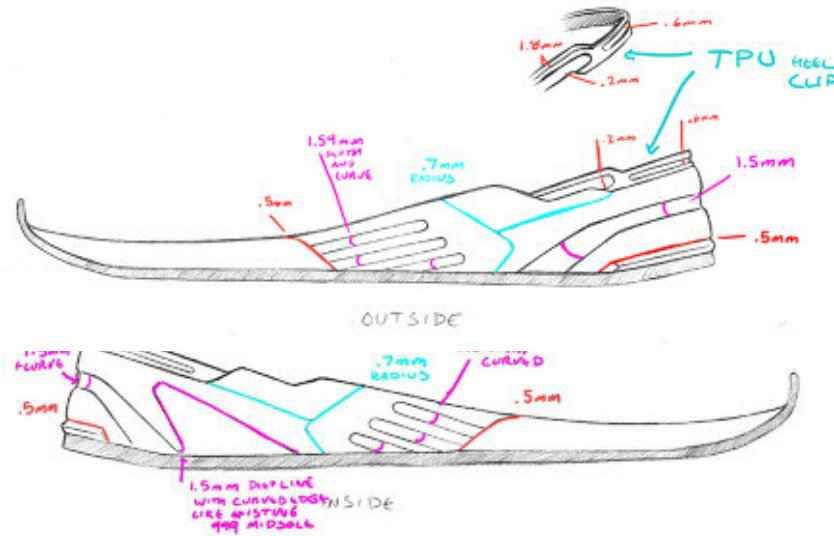


## ■ Outsole Process

Create simple linear and work with sole factory to create the final design. Once the CAD is ready, it is reviewed by the design team and then changed are marked before sending it to the factory for a 3D print is made. Once the 3D is approved, then the final design is made and placed on the sample as seen on previous pages.



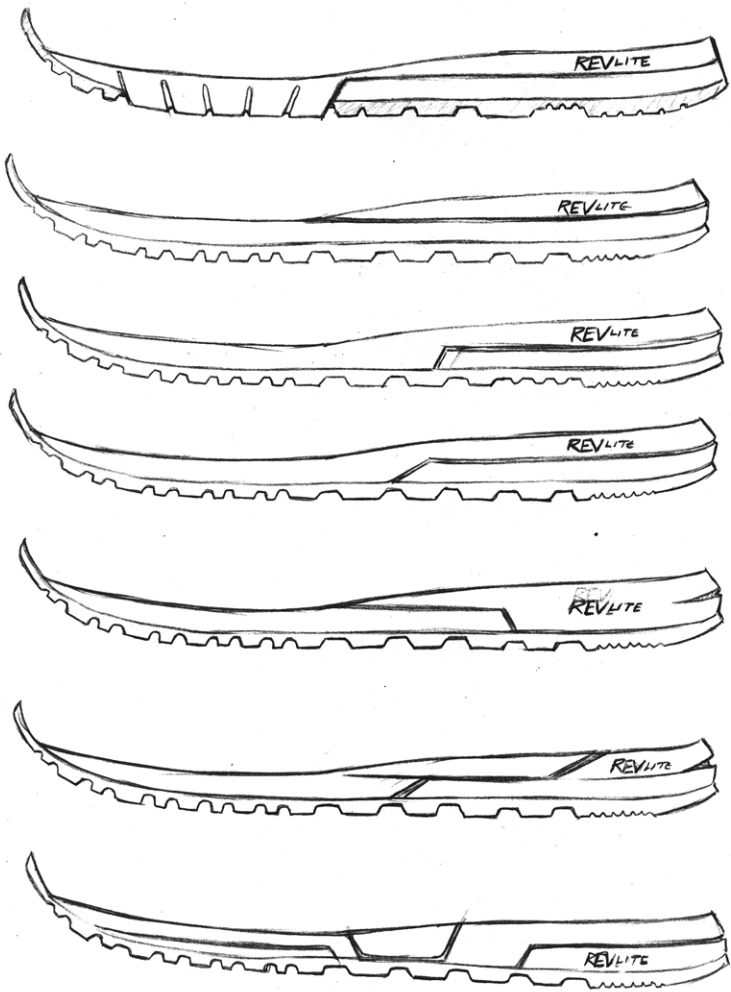
# RevLite Outsole



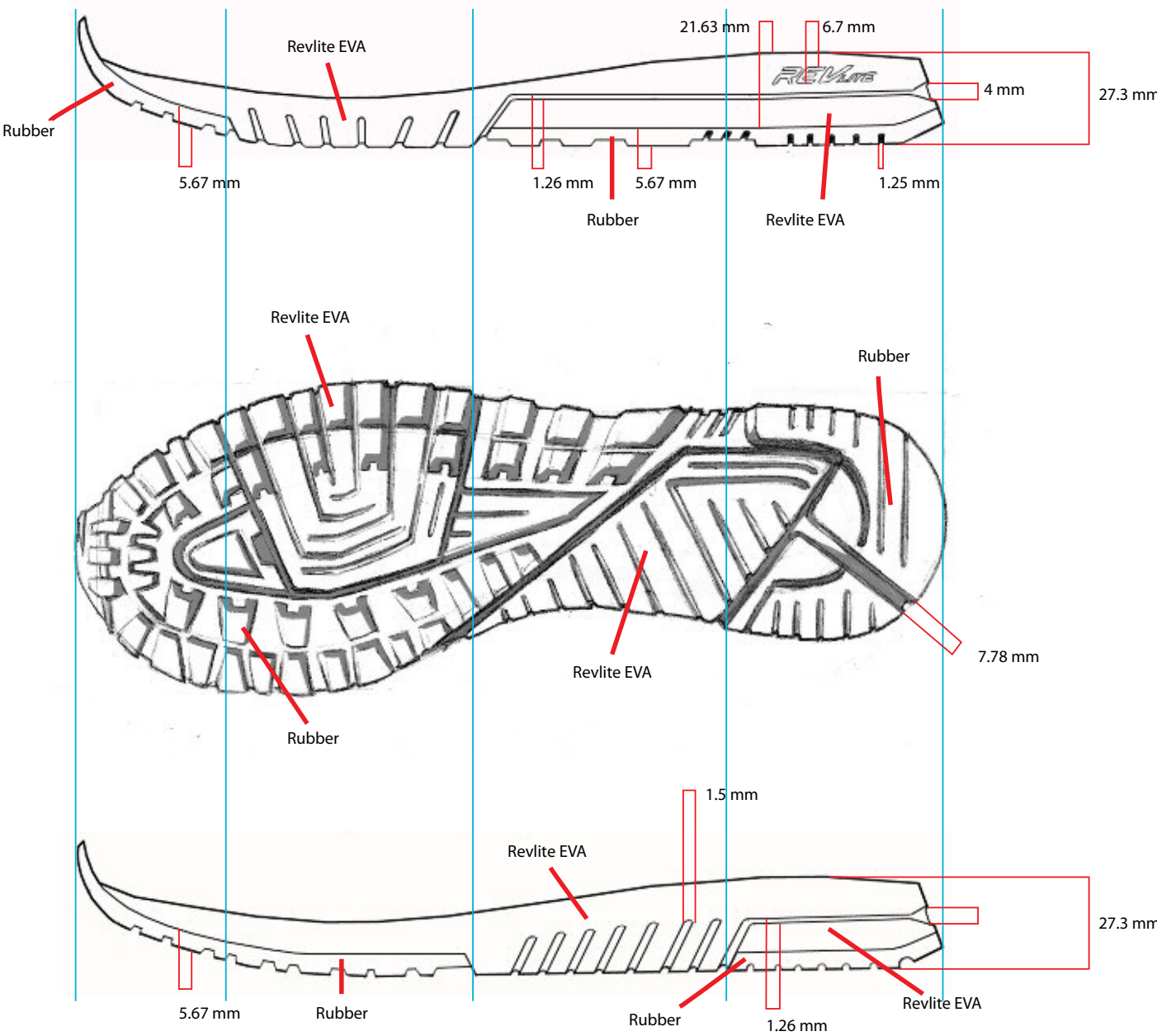
# RevLite Outsole

■ Drawings of outsole design used on MRL574

I sketch my designs by hand and to scale so that I can have more ideas flow faster before I import my sketch into AI before sending to the mold designer.



VICTOR JAMES TORO

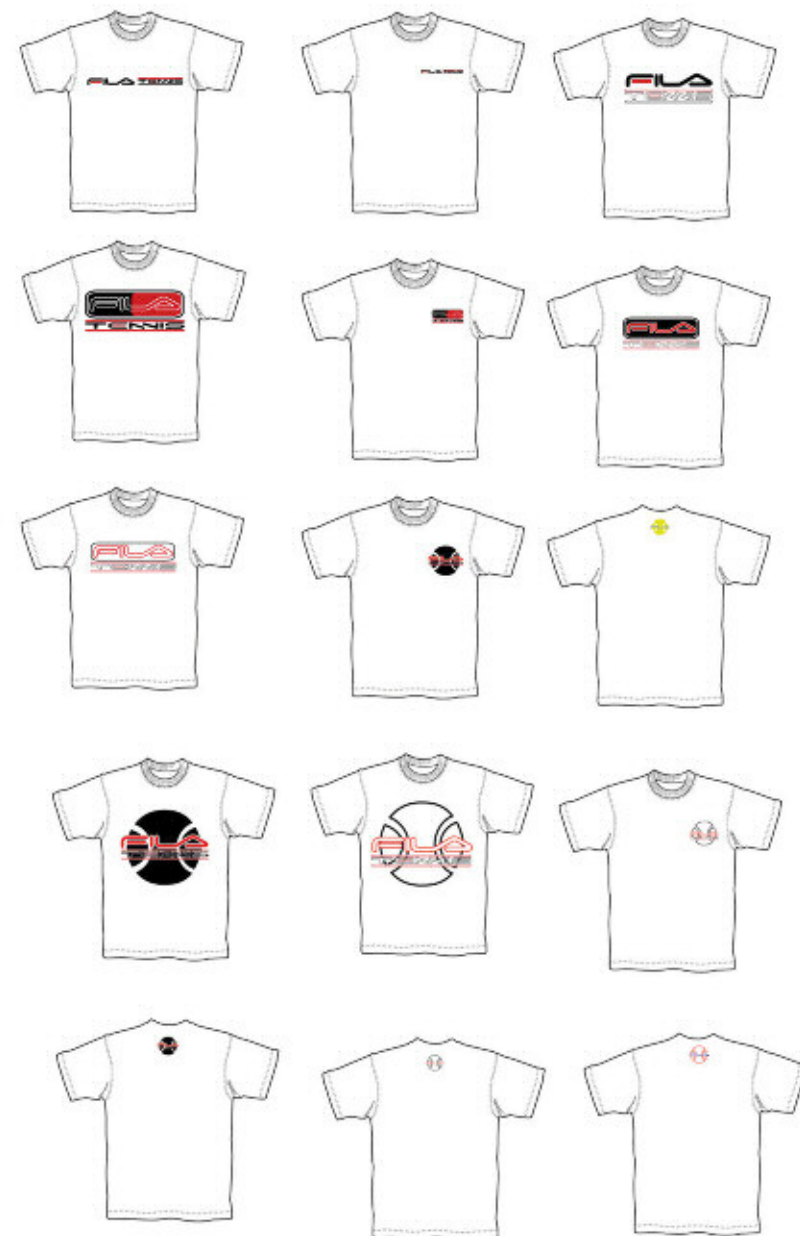
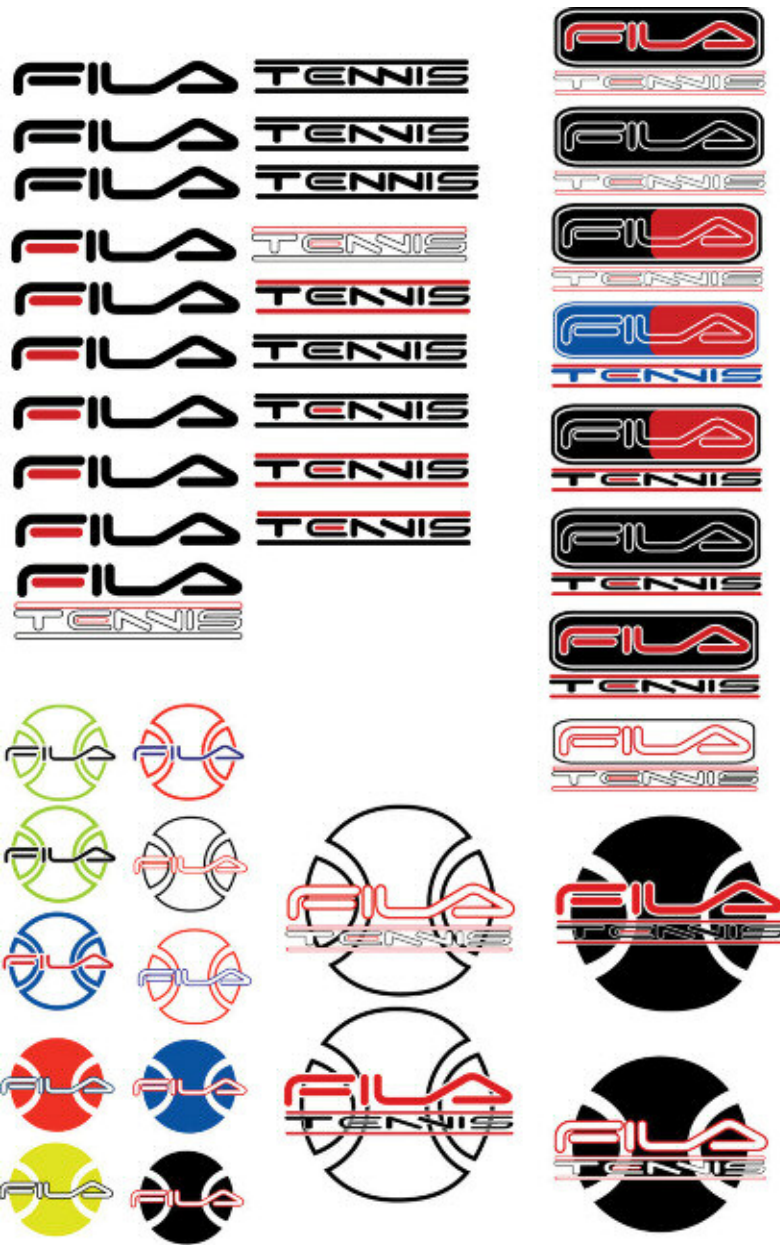


# Fila Tennis

## ■ Color process and logo placement

These are various versions of the FILA "Speed Logo" that was used at one for for high level sports product developed for Fila.

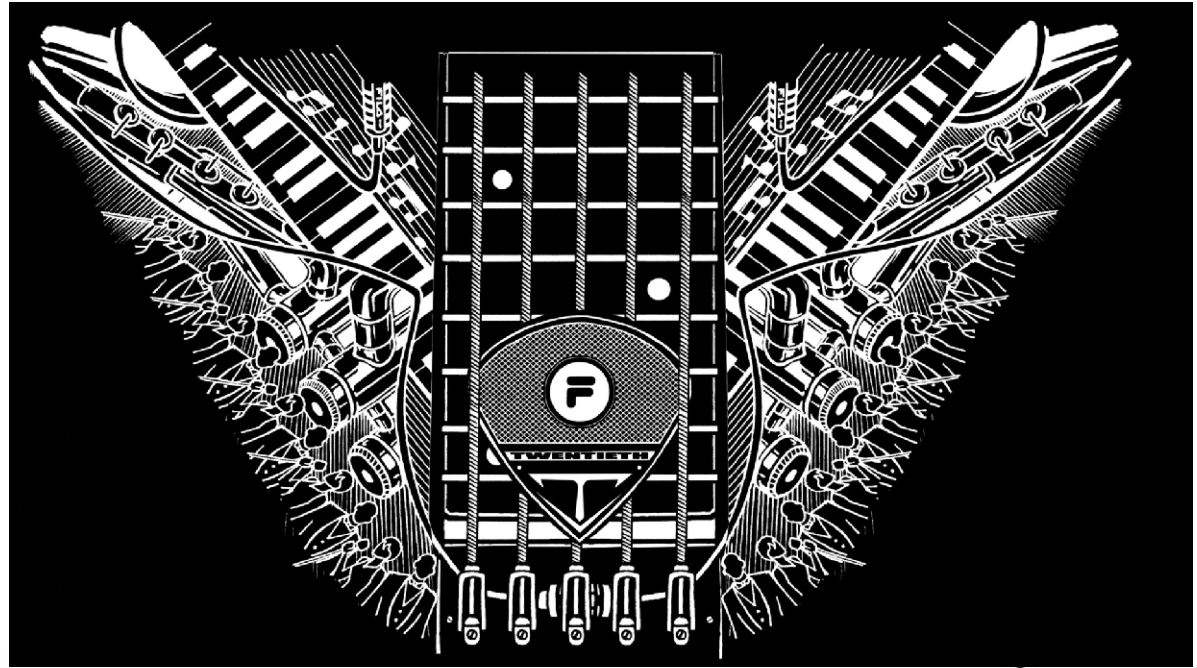
I used a combination of the logo and Fila's classic Heritage Combination Logo to make these variations and apply them for production use.



# F-13 20th

## ■ Hand Drawn Graphics

The design on the upper for this F-13 was hand drawn with pen and ink then inverted and edited to fit on the Vamp, Collar and Quarter.



## ■ Laser Etched Upper

Close up details



VICTOR JAMES TORO

# Fila M-Squad

## ■ Hand Drawn Graphics

Hand drawn graphics for a back to school M-Squad with a D.J. theme and musical notes.



## ■ Laser Etched Upper

Close up details



VICTOR JAMES TORO

# Fila: Shark & Dragon

## ■ Hand Drawn Graphics

Hand drawn Dragons and Sharks on a Filla football shoe for infants to teeagers. The final design was screen printed with high abrasion inks that can withstand scuffing for the life of the shoe.

